

96°W

95°W

94°W

93°W

Houston

29°N

29°N

28°N

28°N

27°N

27°N

96°W

95°W

94°W

93°W

22.4

0.7

4.7

23.9

92.8

86.1

0.9

3.4

3.1

51.8

1.0

1.7

3.5

48.6

84.7

4.6

42.4

8.1

11.4

2.3

2.0

1.3

3.3

0.0

0.7

3.5

11.2

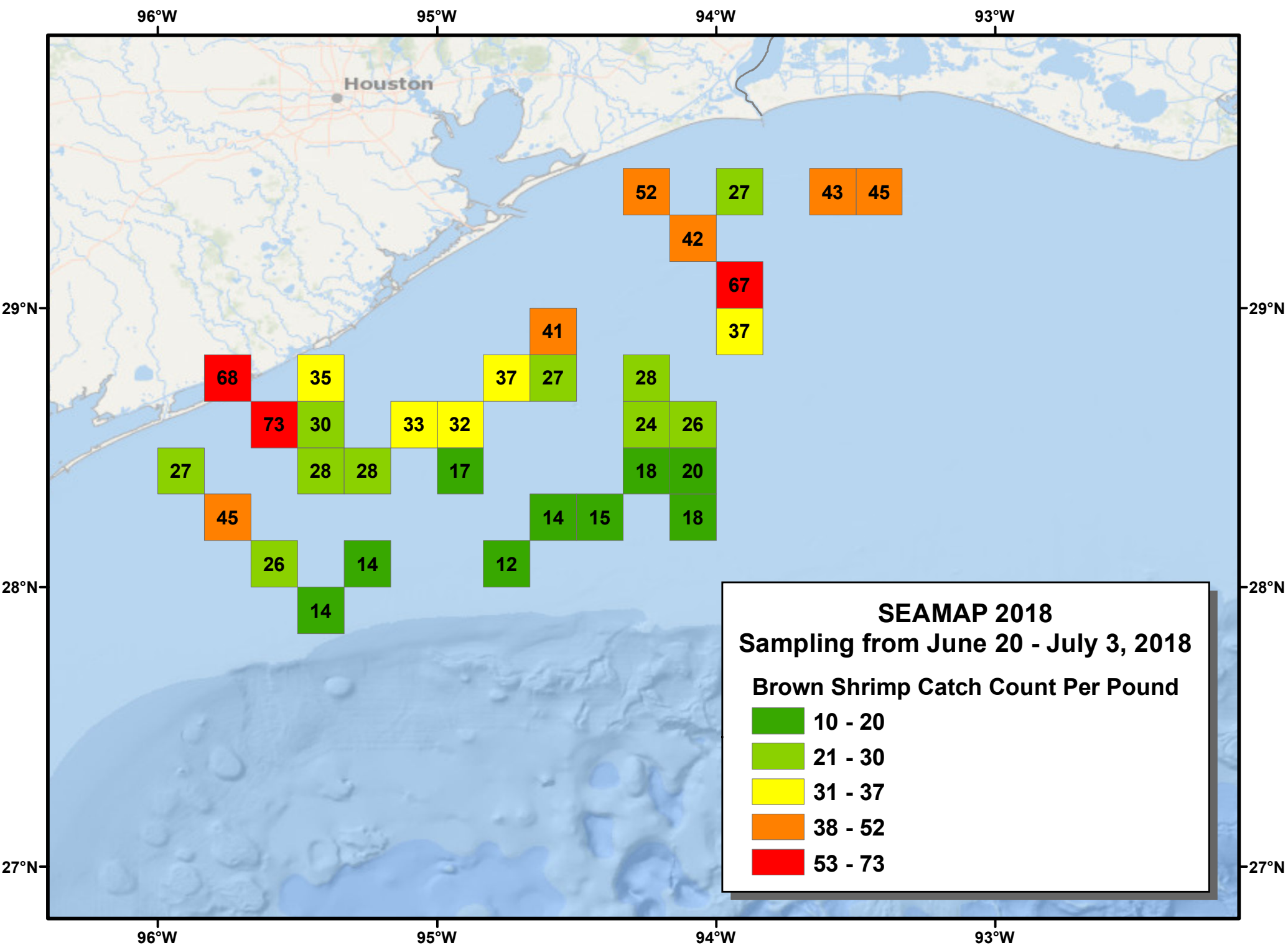
7.5

1.2

2.0

14.6

19.5



96°W

95°W

94°W

93°W

Houston

29°N

29°N

28°N

28°N

27°N

27°N

96°W

95°W

94°W

93°W

68

35

73

30

28

28

33

32

17

37

27

41

28

24

26

18

20

27

45

26

14

14

12

14

15

18

52

42

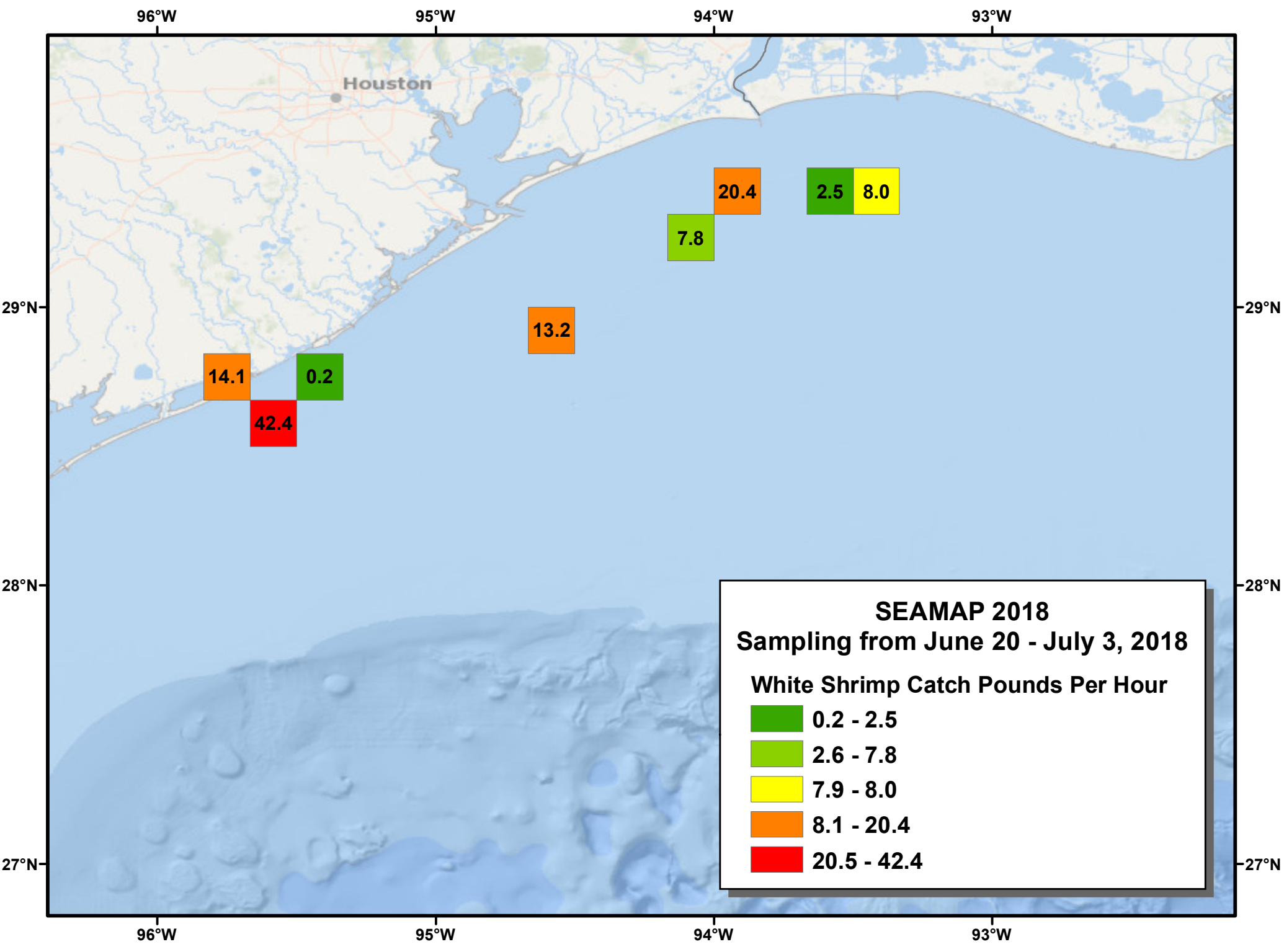
27

37

67

43

45



96°W

95°W

94°W

93°W

Houston

29°N

29°N

28°N

28°N

27°N

27°N

96°W

95°W

94°W

93°W

14.1

42.4

0.2

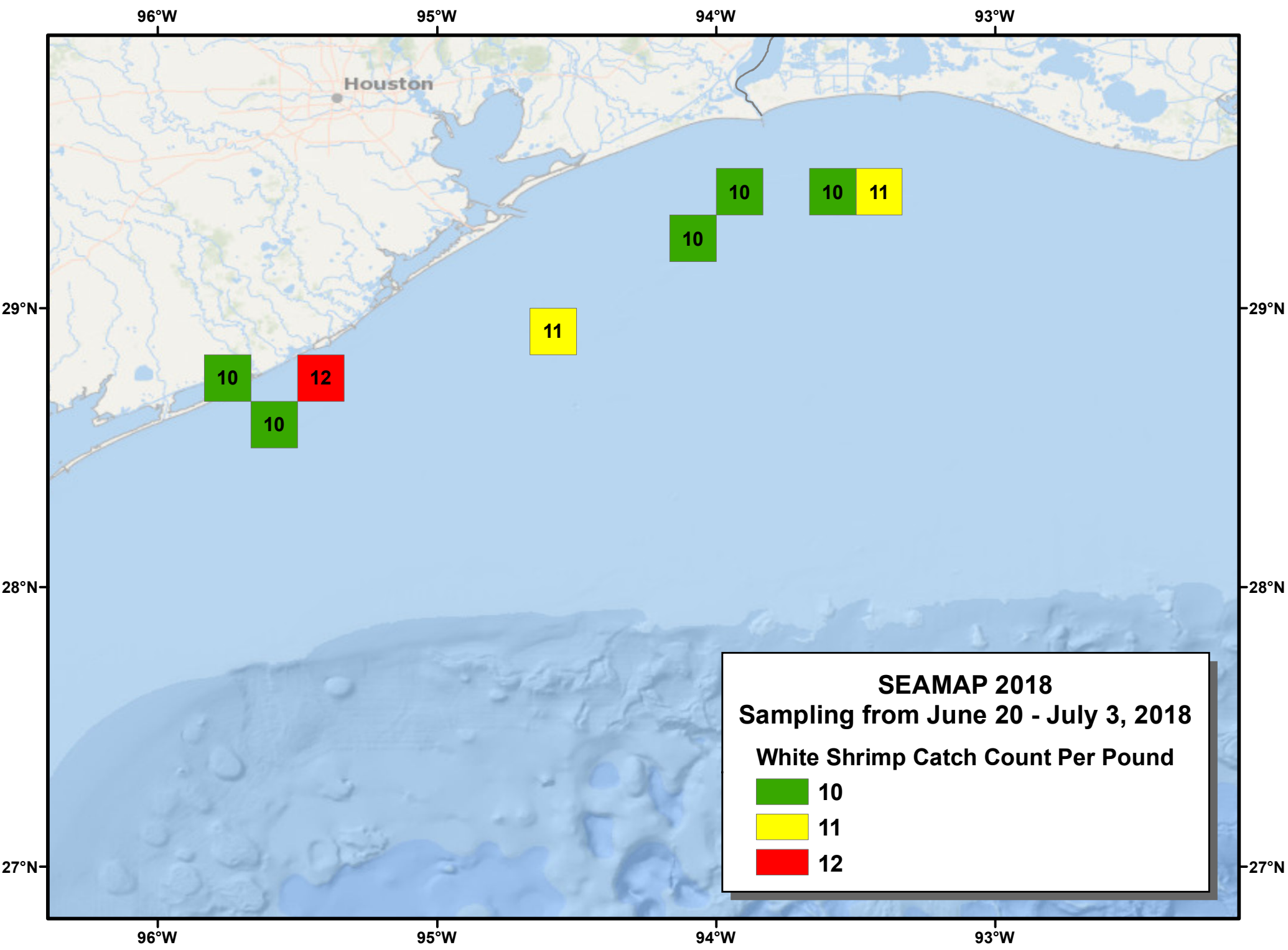
13.2

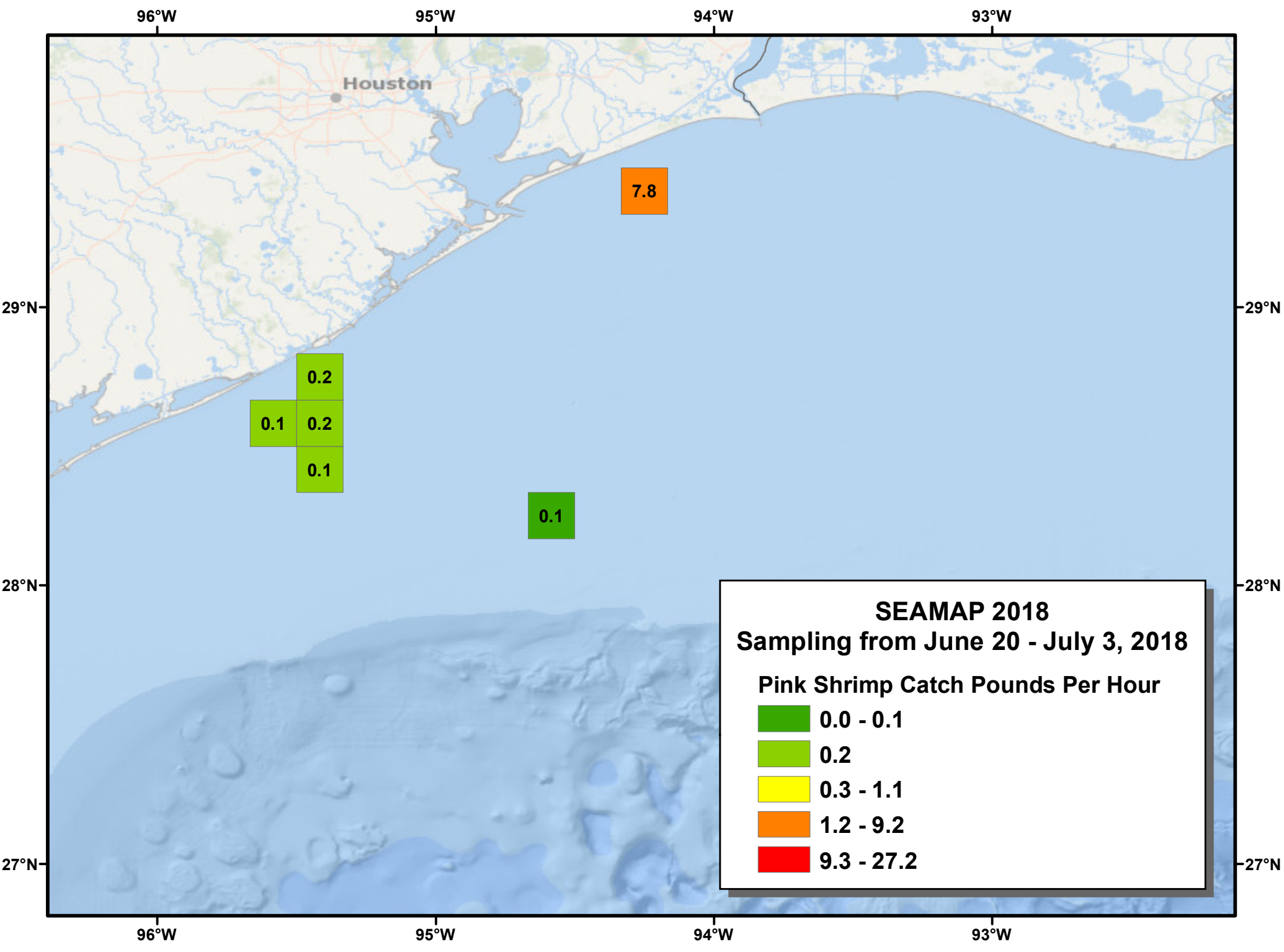
7.8

20.4

2.5

8.0





96°W

95°W

94°W

93°W

Houston

7.8

0.2

0.1

0.2

0.1

0.1

29°N

29°N

28°N

28°N

27°N

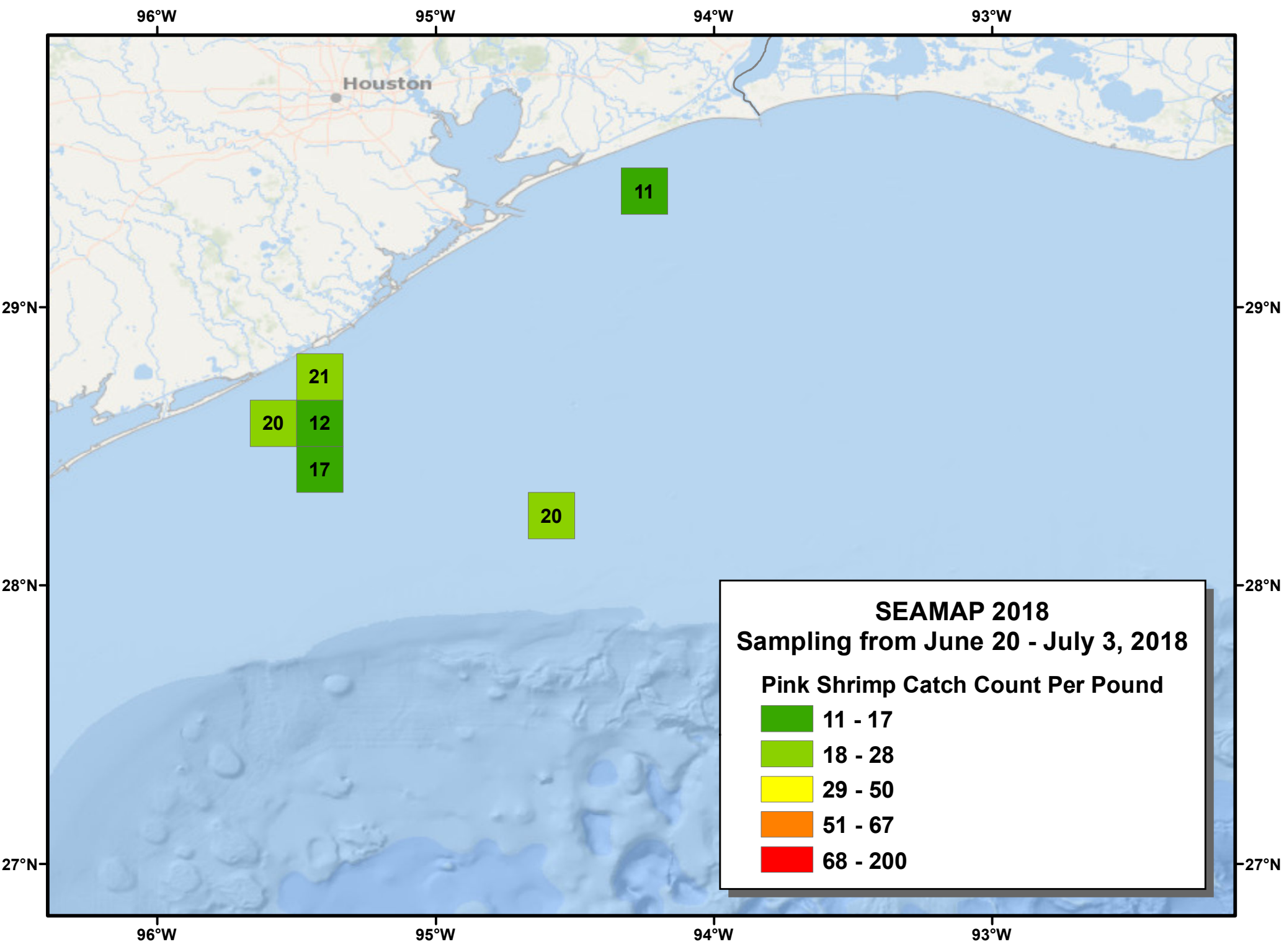
27°N

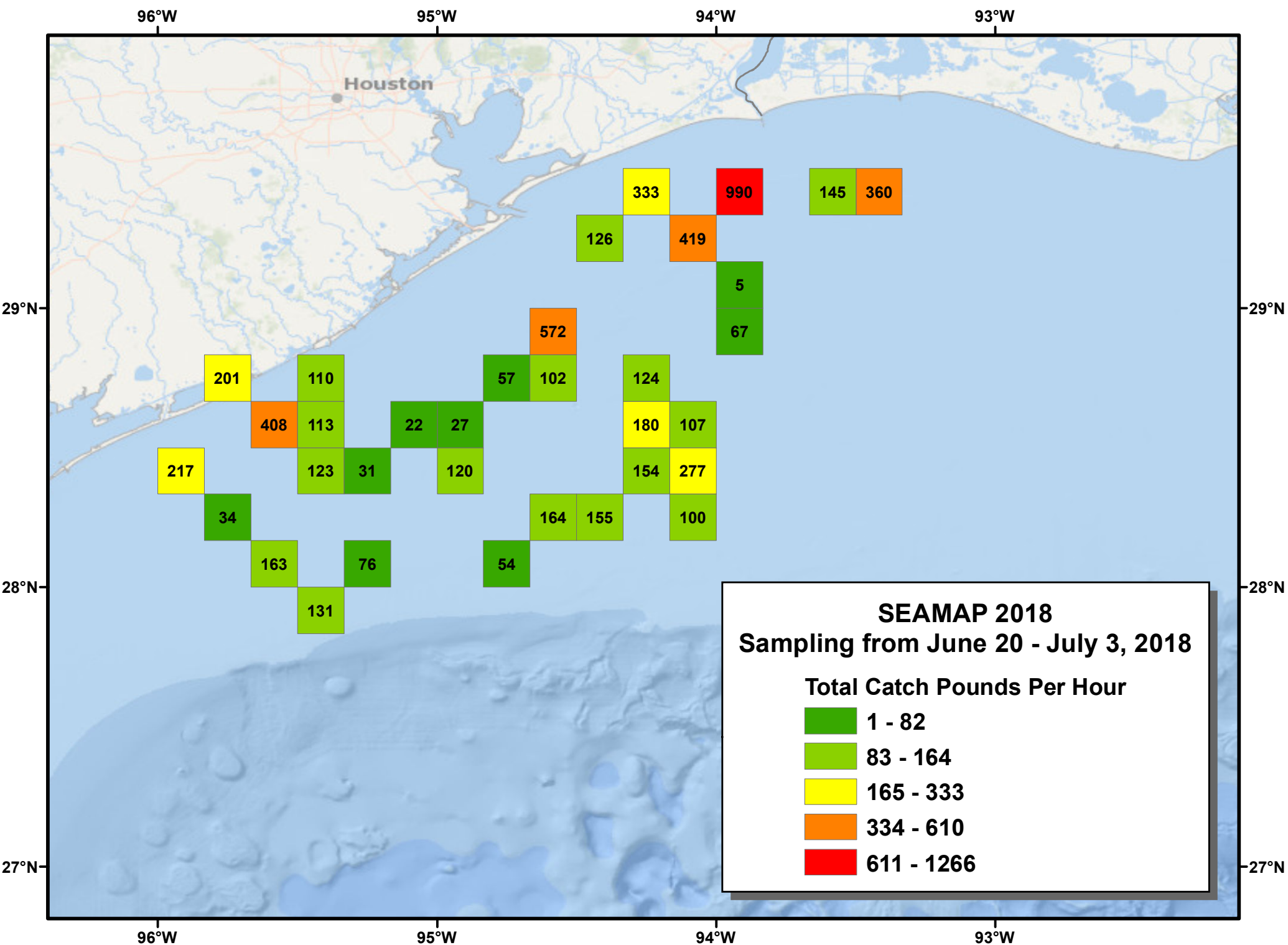
96°W

95°W

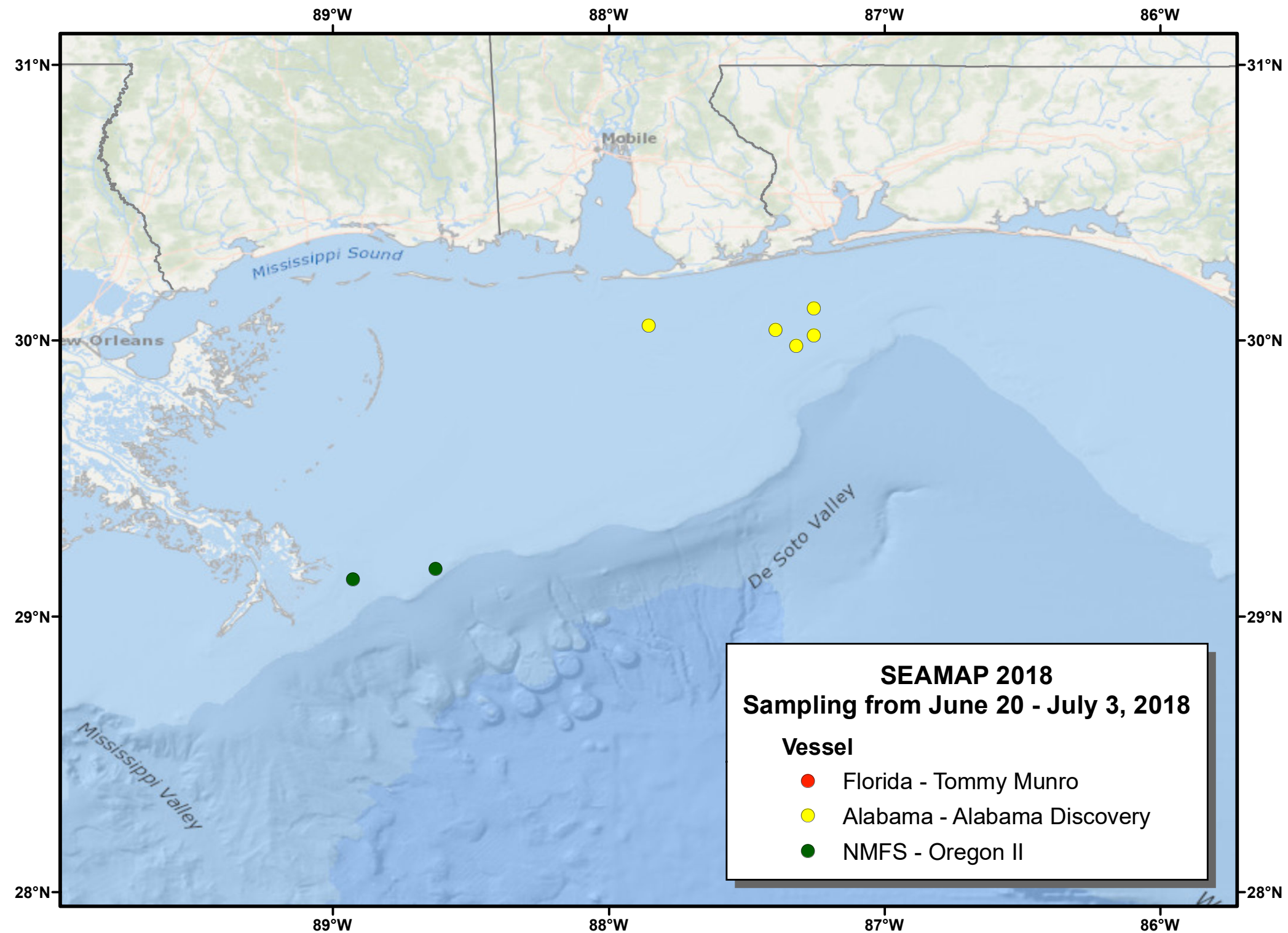
94°W

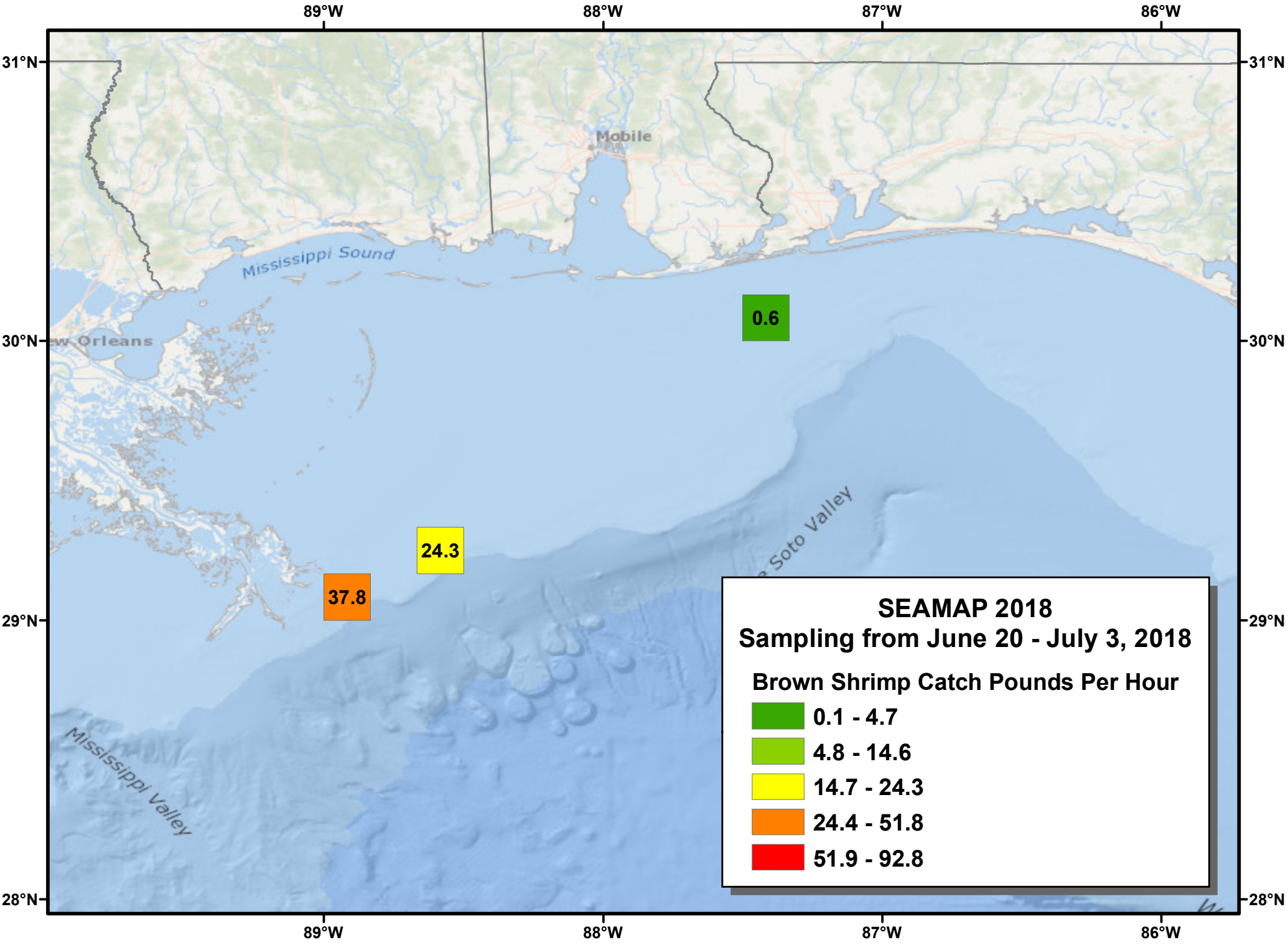
93°W

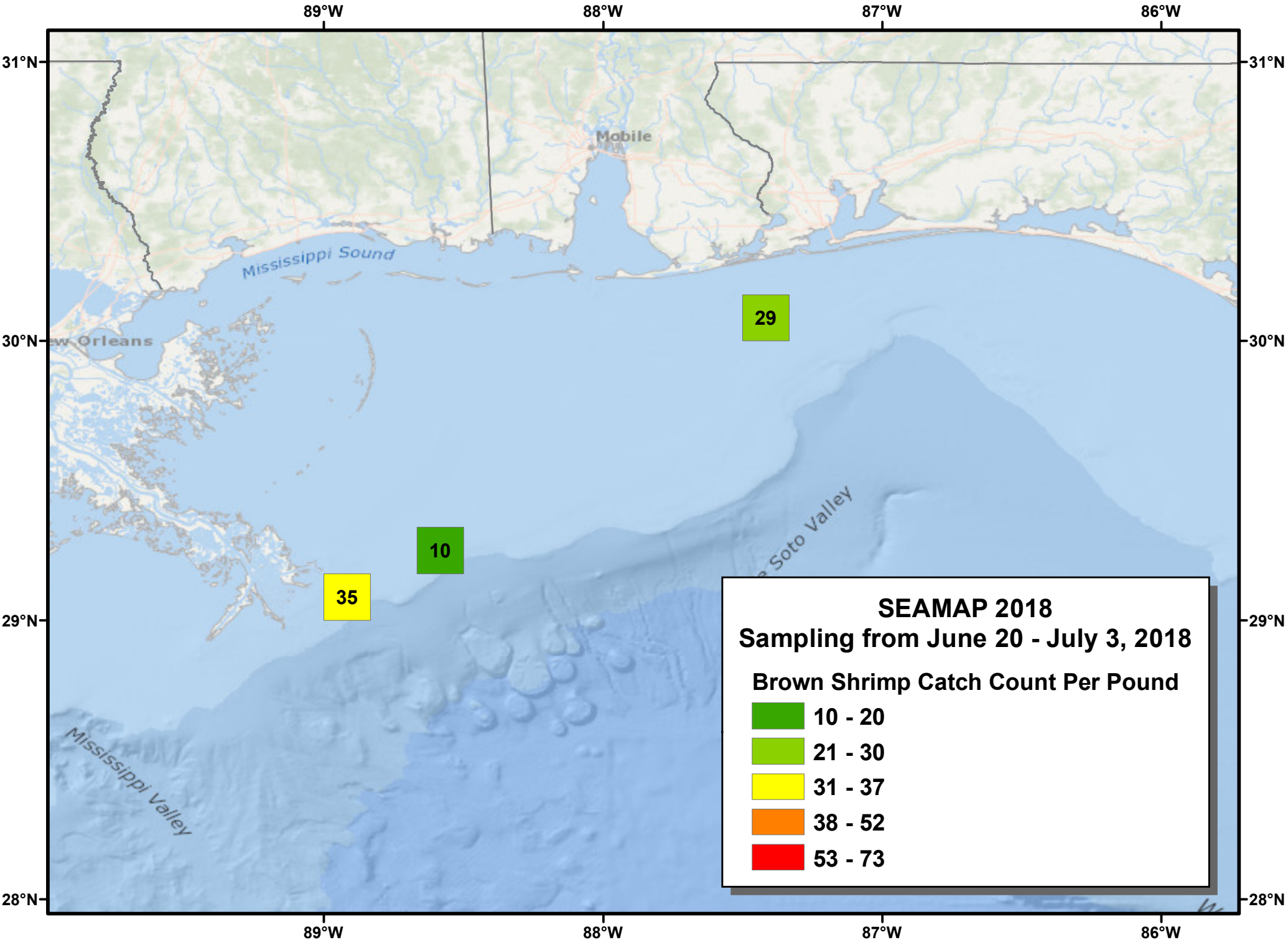


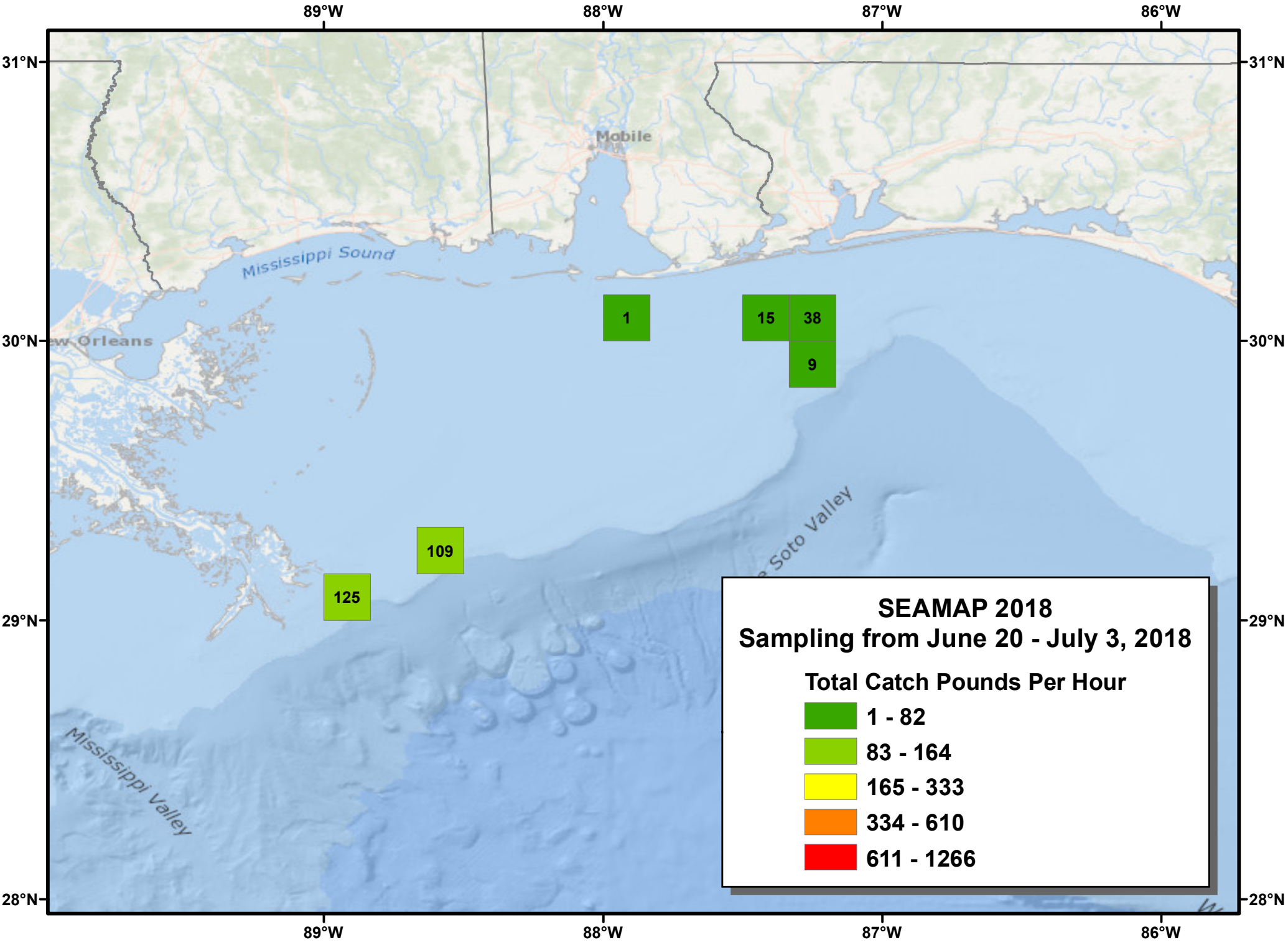


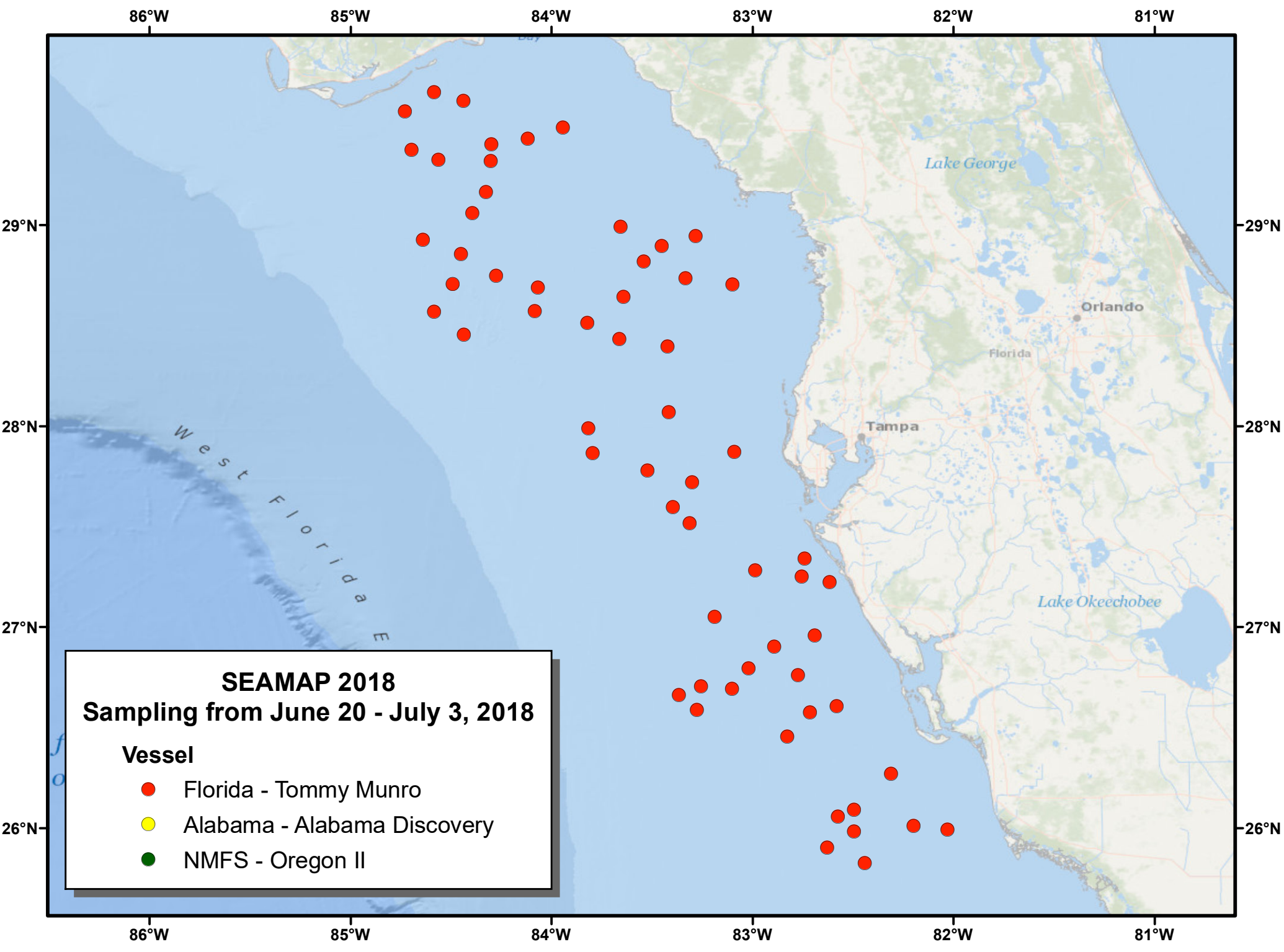


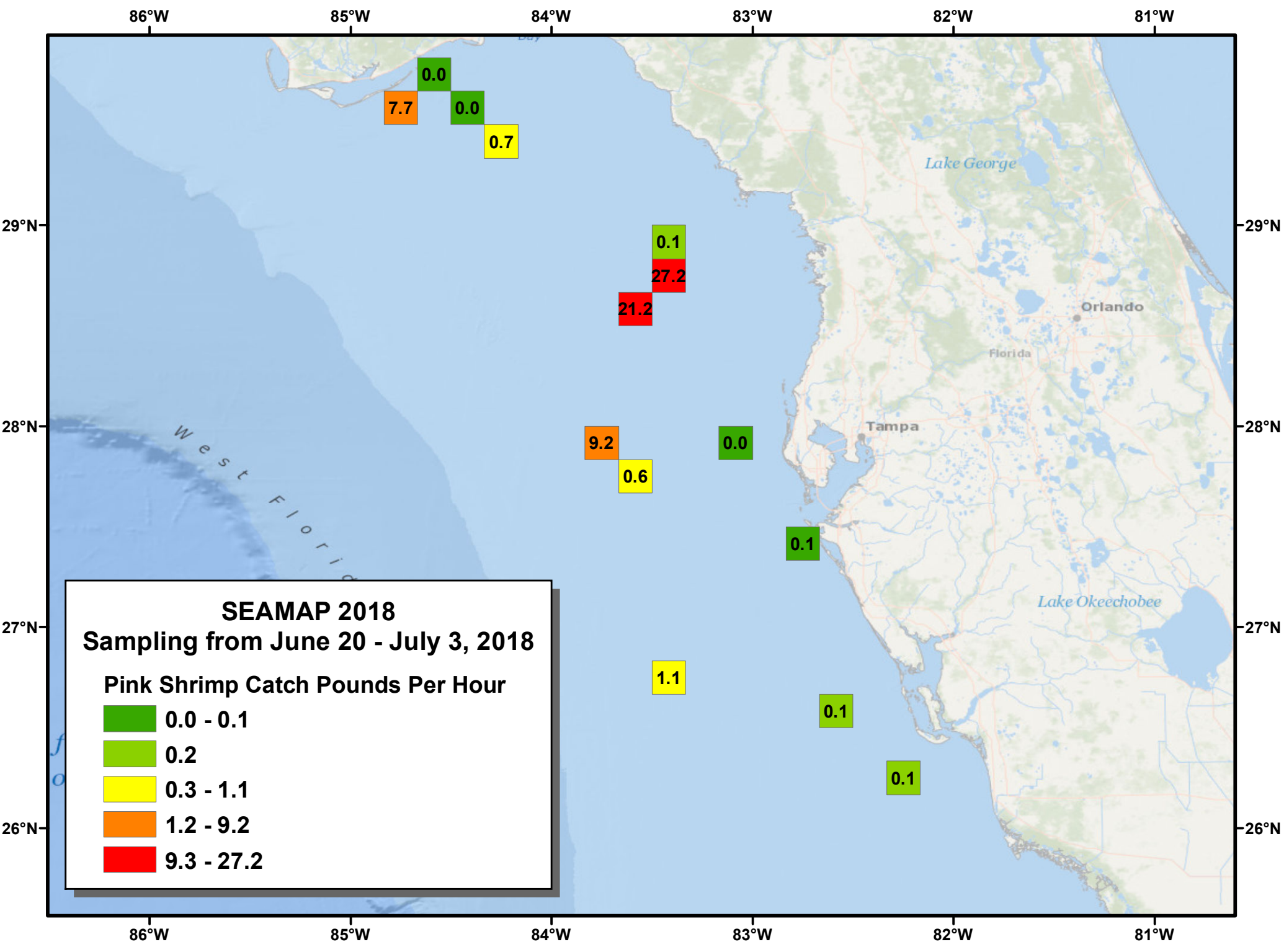


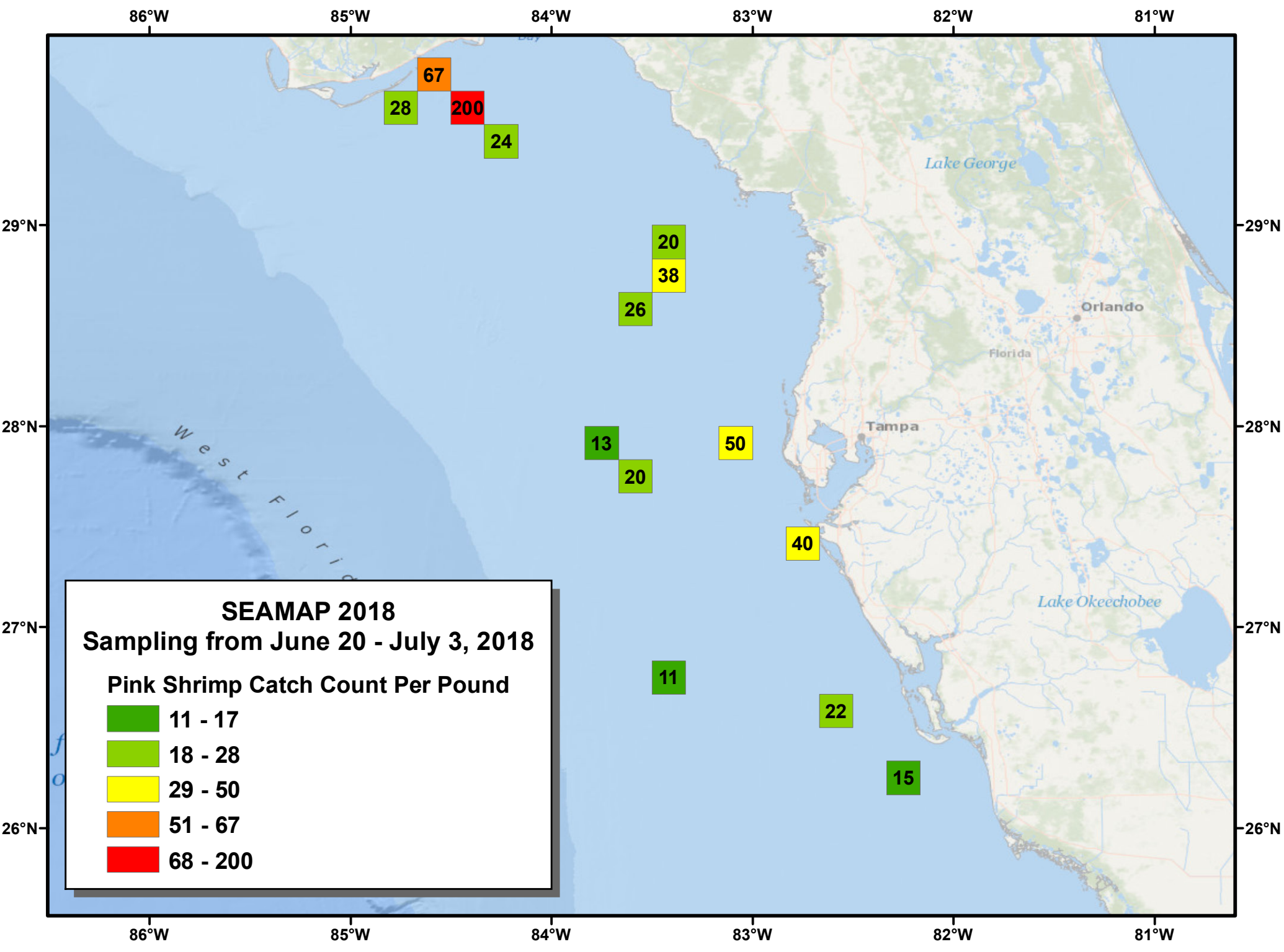












67

28

200

24

20

38

26

13

50

20

40

11

22

15

